

The spread of uvular /r/ in Norway - an updated survey

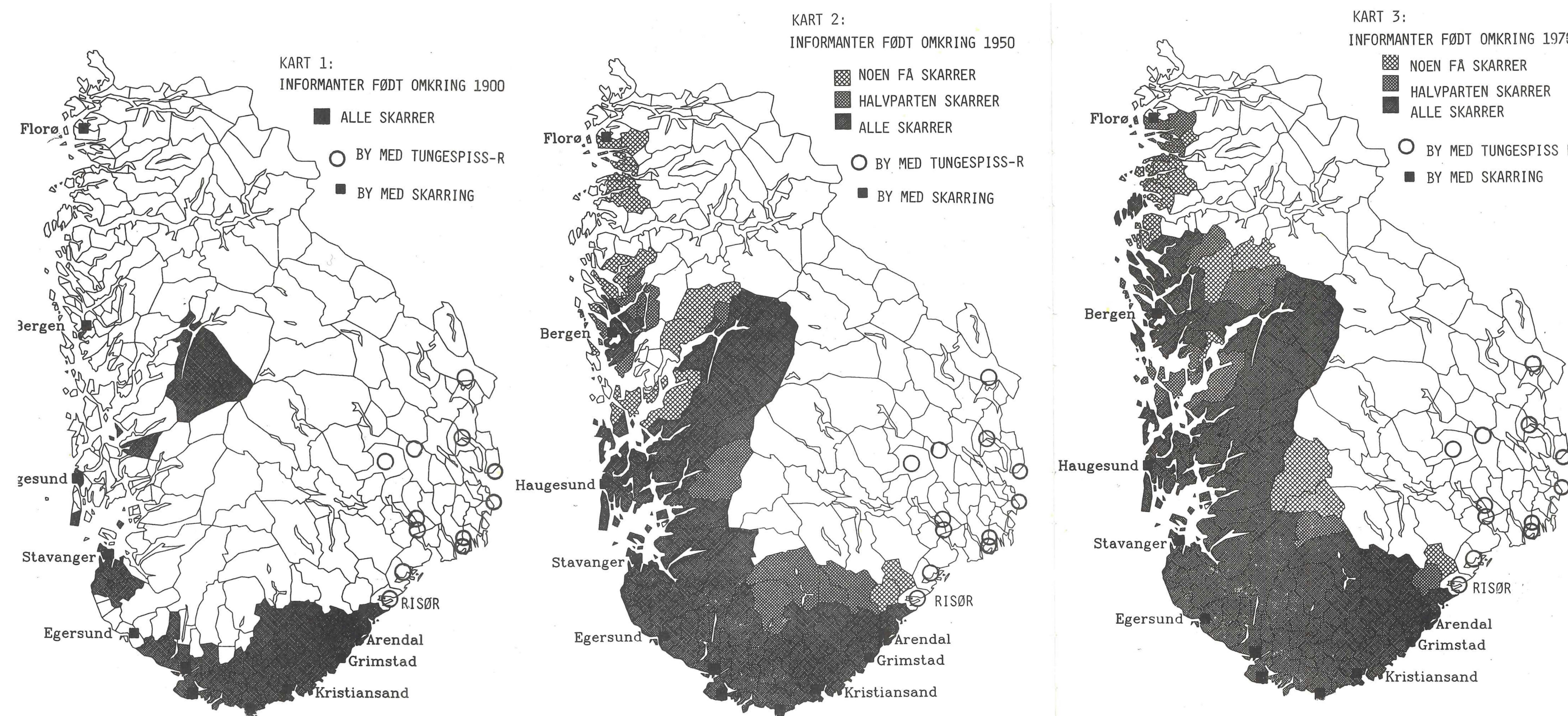
Luca Lukas and Sverre Stausland

1. Introduction

- Uvular realization of /r/ spread to Norway in the 18th century.
- It spread first to cities in southwestern Norway, then later across the region.
- The distribution of uvular /r/ in Norway was last mapped in 1987.
- We present a new map of its current distribution.

2. Uvular /r/ in the 20th century

- Foldvik (1988) mapped the spread of uvular /r/ in the 20th century.
- Maps show three generations: born around 1900, 1950, and 1970.
- Rapid expansion, from mostly cities to covering much of southwestern Norway.
- Many researchers claim that uvular /r/ is still spreading today, but no survey has been done after Foldvik (1988).

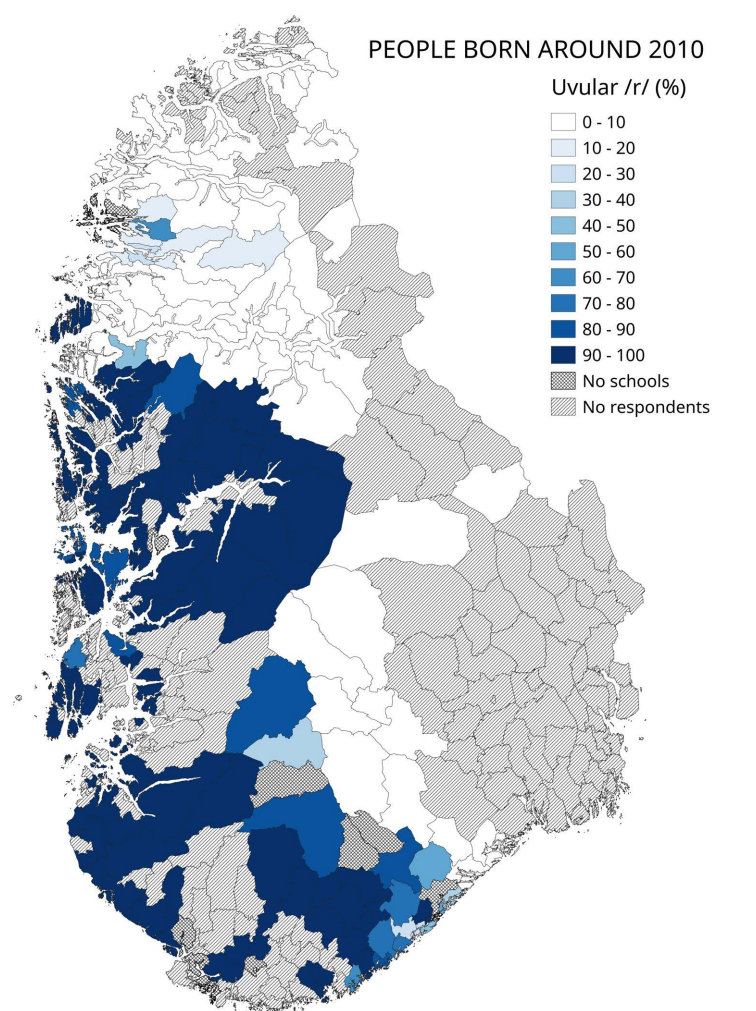


3. Survey

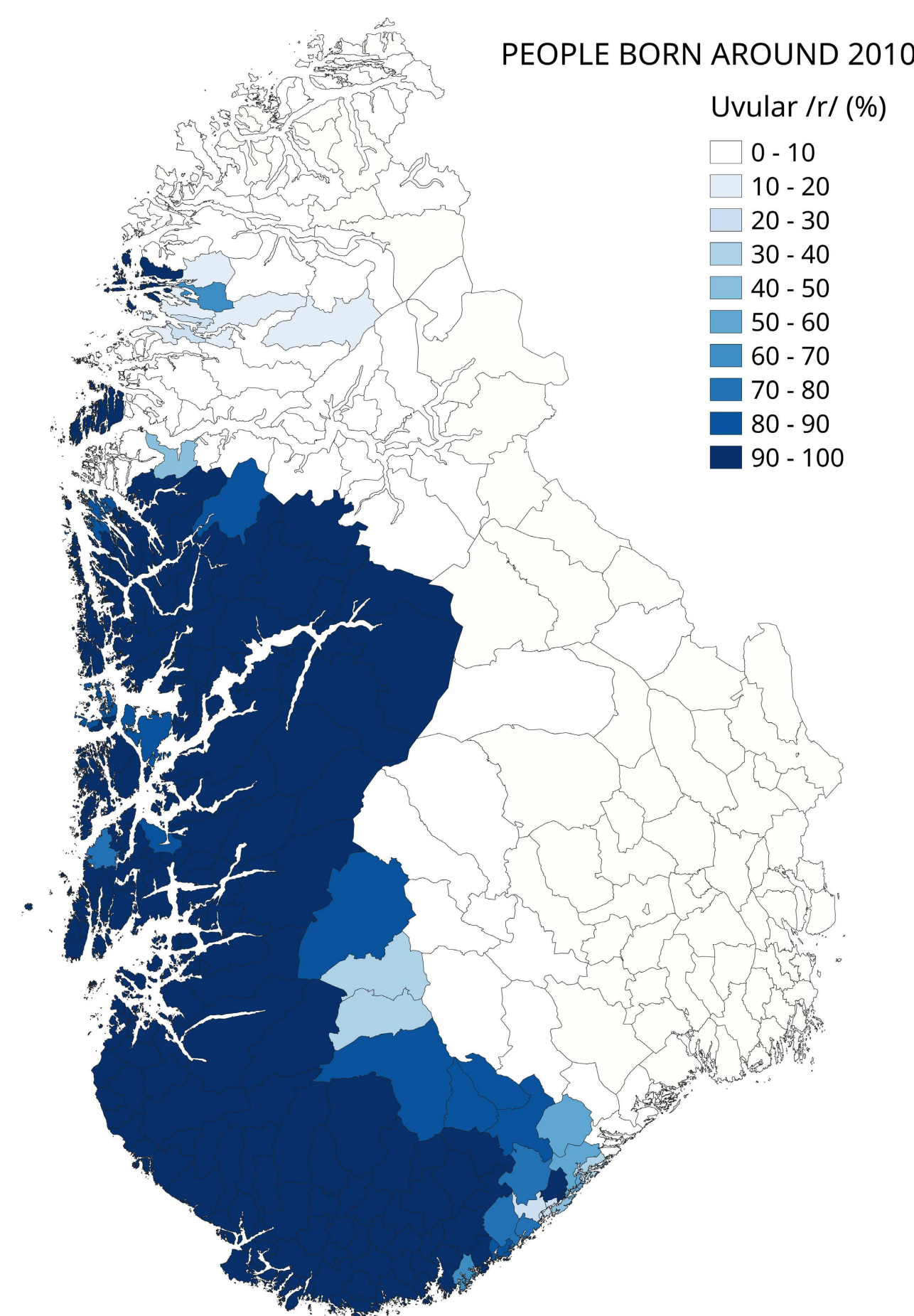
- Digital questionnaire sent to 676 elementary schools in southern and western Norway.
- Teachers asked to estimate percentage of students with uvular /r/.
- Only students who have grown up in municipality were included.
- Limited to students born around 2010.

4. Results

- Responses from 197 schools, 157 of 276 municipalities.
- Municipalities along the uvular /r/ border were prioritized during the data collection.
- Map shows average uvular /r/ use per municipality, each color represents intervals of 10 %.
- Filled-in version also created for easier comparison with earlier maps.



5. New map of uvular /r/



6. Summary of changes between 1970 and 2010

- The distribution of uvular /r/ in 2010 is similar to 1970.
- The main increase is in areas that already had some uvular /r/ in 1970.
- Marginal geographic expansion in western Norway.
- Declined in some areas, especially in urban areas in southern Norway.
- Uvular /r/ in southern Norway has gone from being an urban phenomenon to being found mainly in rural areas today, as alveolar /r/ regains ground in towns.
- The alveolar /r/ is likely an influence from east Norwegian dialects.